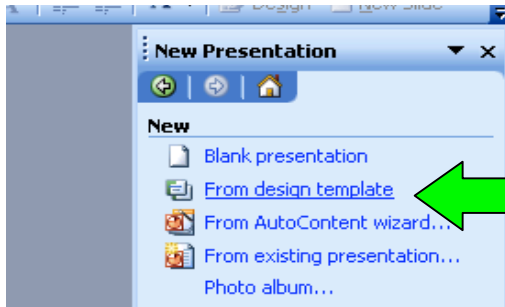
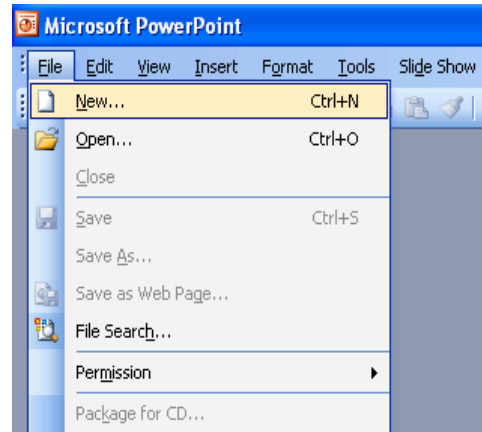


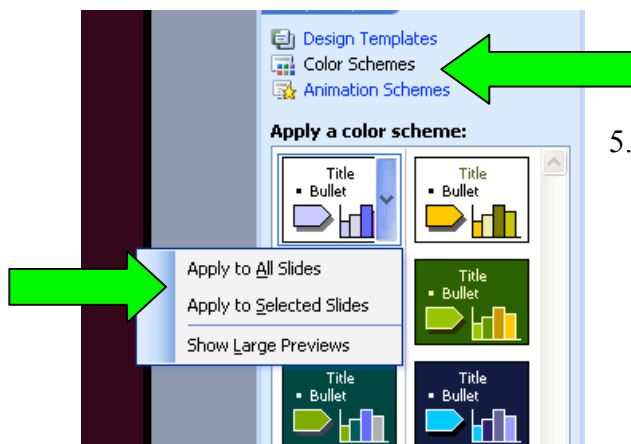
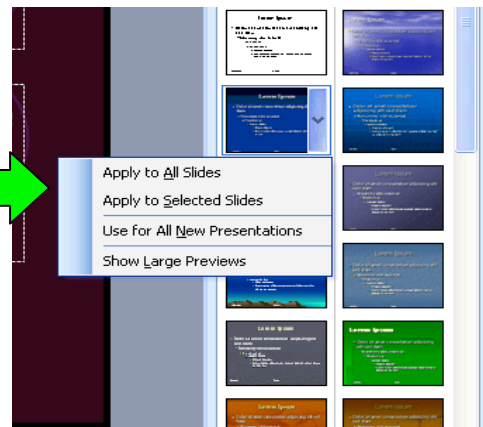
PowerPoint: How to Using Microsoft Design Templates

1. Open Microsoft PowerPoint
2. Click on File
 - a. Scroll down to New



3. Click on From design template

4. Choose a Design Template
 - a. Apply it to all slides or selected slides.



5. To change the Color Scheme: Click on Color Schemes
 - a. Apply to all slides or selected slides